



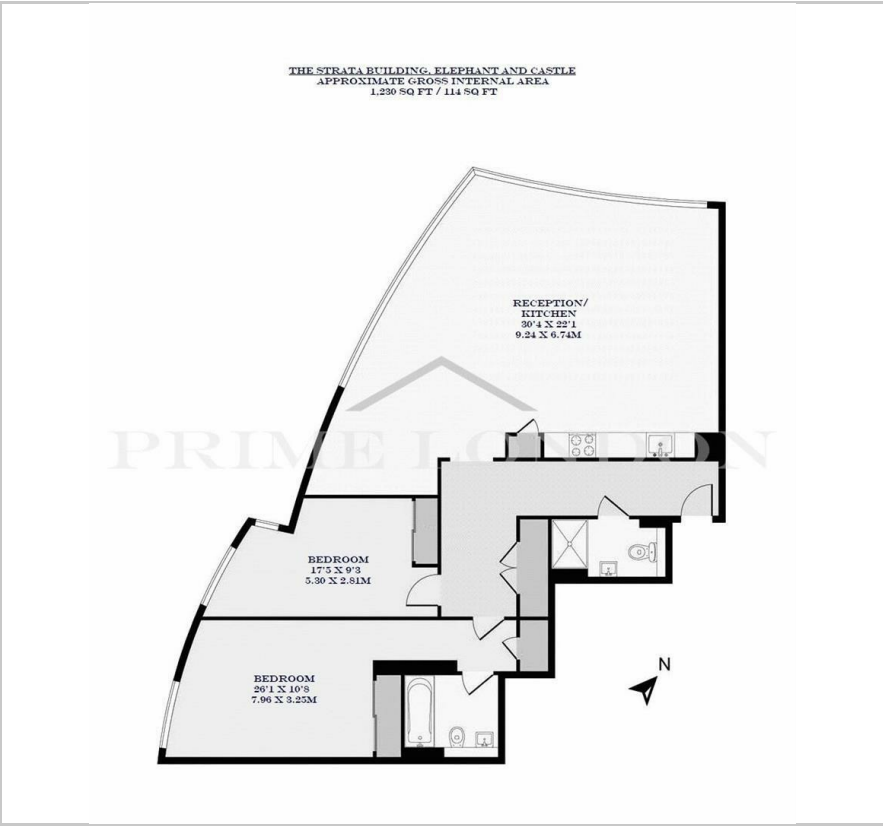
The Strata Building

Walworth Road, Elephant and Castle, SE1 6EL

£1,153 Per Week



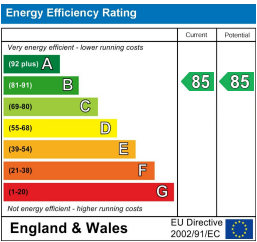
Floor Plan



Area Map



Energy Efficiency Graph



Viewing

By appointment. Contact us on 0207 928 6663 if you wish to arrange a viewing appointment for this property, or require further information.

- Penthouse apartment
- 1,230 sq ft / 114 sq ft
- Stunning views of the City of London
- Secure parking space available
- Fully furnished
- 24 hour concierge



This stunning two bedroom penthouse apartment, with far-reaching views of the City of London and Shard, set at the top of the landmark development The Strata Building, is available to rent through Prime London. The property also comes fully furnished and secure parking is available by separate negotiation.

With great views from all rooms, this fabulous contemporary apartment comprises entrance area with double utility cupboard and storage, a huge bright reception room with floor-to-ceiling windows providing unparalleled views of the city of London, dining area, open plan fitted kitchen with integrated appliances and work tops, two double bedrooms with fitted wardrobes, and two modern bathrooms (one of which is en suite).

This landmark development has the benefit of 24hr concierge and is conveniently located moments from Zone 1 Underground and mainline stations, bus interchange and shopping centre.



These particulars, whilst believed to be accurate are set out as a general outline only for guidance and do not constitute any part of an offer or contract. Intending purchasers should not rely on them as statements of representation of fact, but must satisfy themselves by inspection or otherwise as to their accuracy. No person in this firm's employment has the authority to make or give any representation or warranty in respect of the property.